

# 900MHz SPREAD SPECTRUM

## For XR20 Command Processor™ Panels

### Description

Digital Monitoring Products dealers can now incorporate 900MHz spread spectrum wireless devices into their Command Processor™ systems using the new 872 HARD-WIRE-LESS™ Interface Card from DMP. The 872 supports the FA series of 900MHz wireless receivers and transmitters from Inovonics and also provides an LX-Bus™ for connecting DMP hardwired zone expanders, output expanders, 6155LX and DS775LX PIRs, and 5845LX Glassbreak Detectors.

### 872 HARD-WIRE-LESS™ Interface Card

The 872 card allows you to add 100 expansion zones for either all hardwire, all wireless, or any combination of both types of devices. Hardwire devices connect to the card's 4-wire LX-Bus™.

### Wireless Receivers

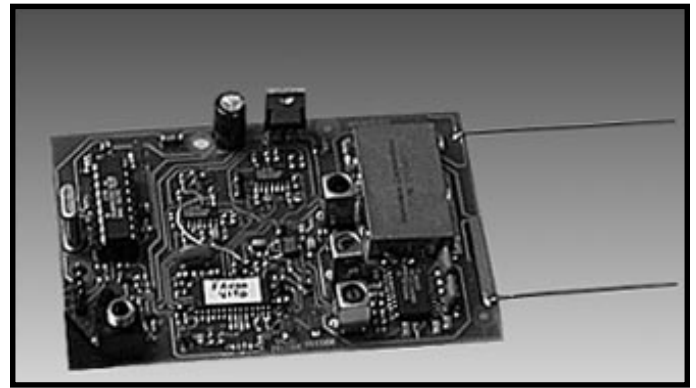
Wireless systems require an Inovonics wireless receiver that connects to the 872 through a single 3-wire harness provided with the card. The 872 is suitable for use with the FA400 Remote Receiver and FA525 Real-Time Repeater. Both models offer outstanding signal reception and noise discrimination features to protect against environmental obstacles and missing transmitters.

### Choice of wireless detectors

Dealers can choose from a variety of transmitter types to meet the requirements of their wireless installations. A diagram is included on the back of this sheet. The list of wireless products available include a standard transmitter for connecting remote contacts and a wide gap transmitter with an internal reed switch alarm contact. This transmitter can also be used with remote contacts attached to the building's doors or windows. Wireless smoke and glassbreak detectors and PIRs are available as well as a signal repeater to extend the distance at which transmitters can be located and a pendant transmitter end users can carry to signal for emergency assistance.

### Simplified programming

Whether installing wireless with the initial installation or adding it later, the simple programming steps required can be found in the Zone Information section of the panel's internal programmer. This section allows you to enter individual characteristics for each transmitter to define the panel's response to its activity.



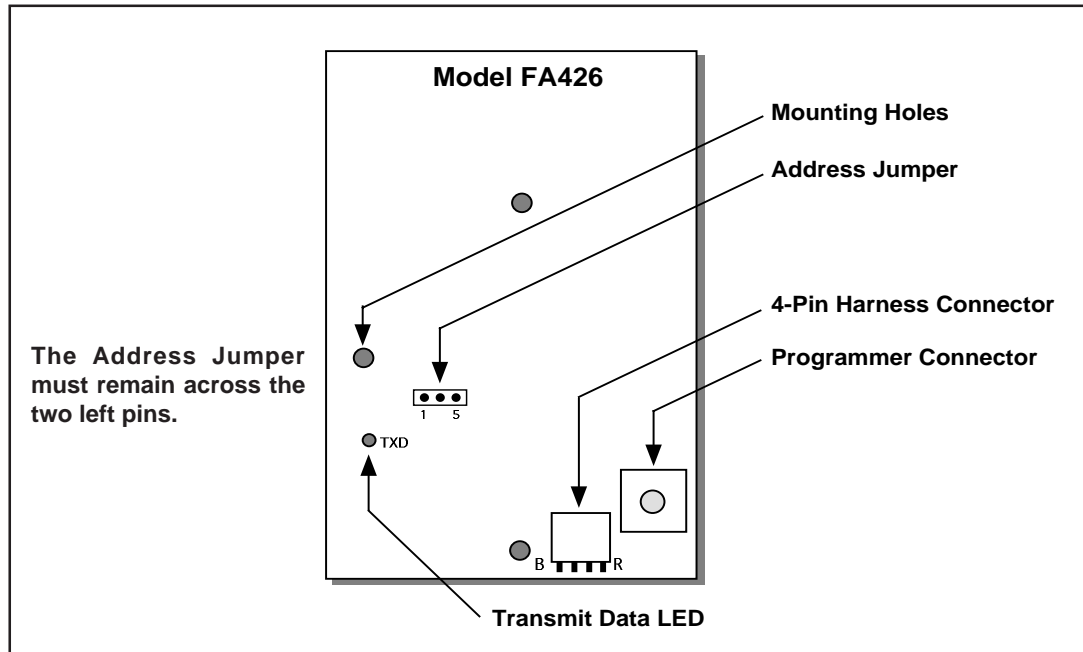
### Features

- Compatible with Inovonics FA series 900MHz wireless transmitters
- Combine hardwire and wireless points on one system
- Works with the DMP 872 HARD-WIRE-LESS™ Card
- Allows expansion up to 100 wireless points
- Can be used with repeaters for better signal reception
- Simple loop programming from panel
- Setup program allows easy identification of overlapped loop addresses
- Advanced 900MHz radio technology
- Wide choice of wireless protection devices:
  - \* Standard transmitter
  - \* Wide gap transmitter
  - \* Smoke detector
  - \* Sentrol® glassbreak detector
  - \* Sentrol® passive infrared detector
  - \* Emergency pendant
  - \* Hand-held remote control unit
  - \* Wireless repeater
- Multi-frequency 900MHz transmissions
- Quick and easy installations
- Variable 10, 30, or 60 second check-in times

**Description**

The FA426 Wireless Receiver allows you to add up to 16 Inovonics FA series transmitters to the keypad data bus of an XR20 Command Processor™ panel. The FA426 mounts in the panel enclosure and connects to the keypad data bus terminals using a Model 300 Wire Harness supplied with the module.

An Inovonics FA116 Programmer is used to program the wireless points. The FA116 must contain firmware version 1.50 or higher to operate properly with the FA426 Receiver. If you have an earlier version firmware, please contact Inovonics Technical Support at (800) 782-2709 for assistance in upgrading. FA116 Programmers purchased after August 1, 1996 will contain version 1.50 or higher.



**Figure 1: FA426 hardware descriptions.**

**Installing the FA426 receiver**

1. Touch the side of the enclosure with your hand to discharge any static electricity in your body before picking up the FA426 module.
2. Pick up the module and slowly guide the two antennae through the openings in the top of the enclosure.
3. Gently press the three plastic standoffs of the FA426 into the three mounting holes in the right side of the enclosure.

**Connecting the receiver**

The Inovonics FA426 receiver contains a 4-pin connector to which the 4-wire harness is attached. The leads from the harness connect to the panel's keypad data bus on terminals 7, 8, 9, and 10. The list below describes the harness wiring connections.

FA426 Harness		Keypad Bus Terminals
Red	connects to	Terminal 7
Yellow	connects to	Terminal 8
Green	connects to	Terminal 9
Black	connects to	Terminal 10

**FA426 activates keypad address five**

When a programmed FA426 is connected to the XR20, the panel begins polling address five, which is an unsupervised address. This polling allows you to have multiple keypads on address five.



# Programming points with the FA116 Executive Programmer

The following steps walk you through the wireless programming. Make sure the FA426 Receiver is installed and connected to the panel's keypad data bus.

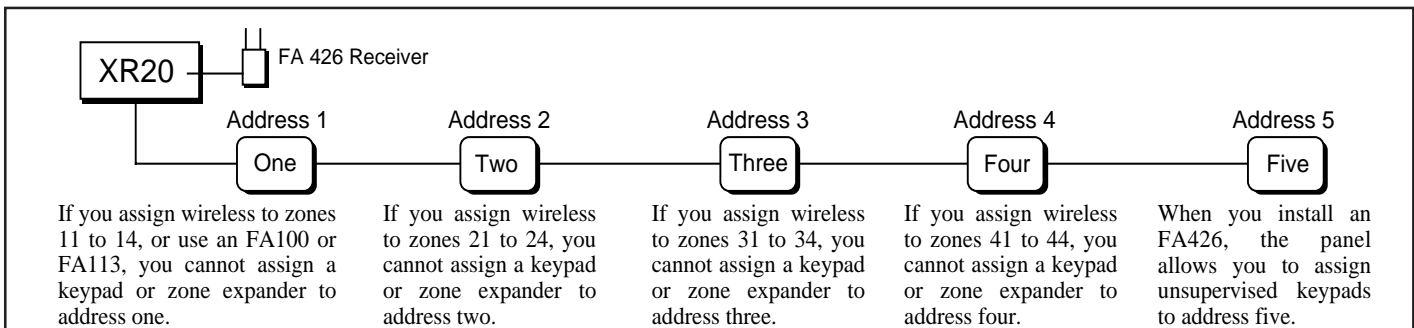
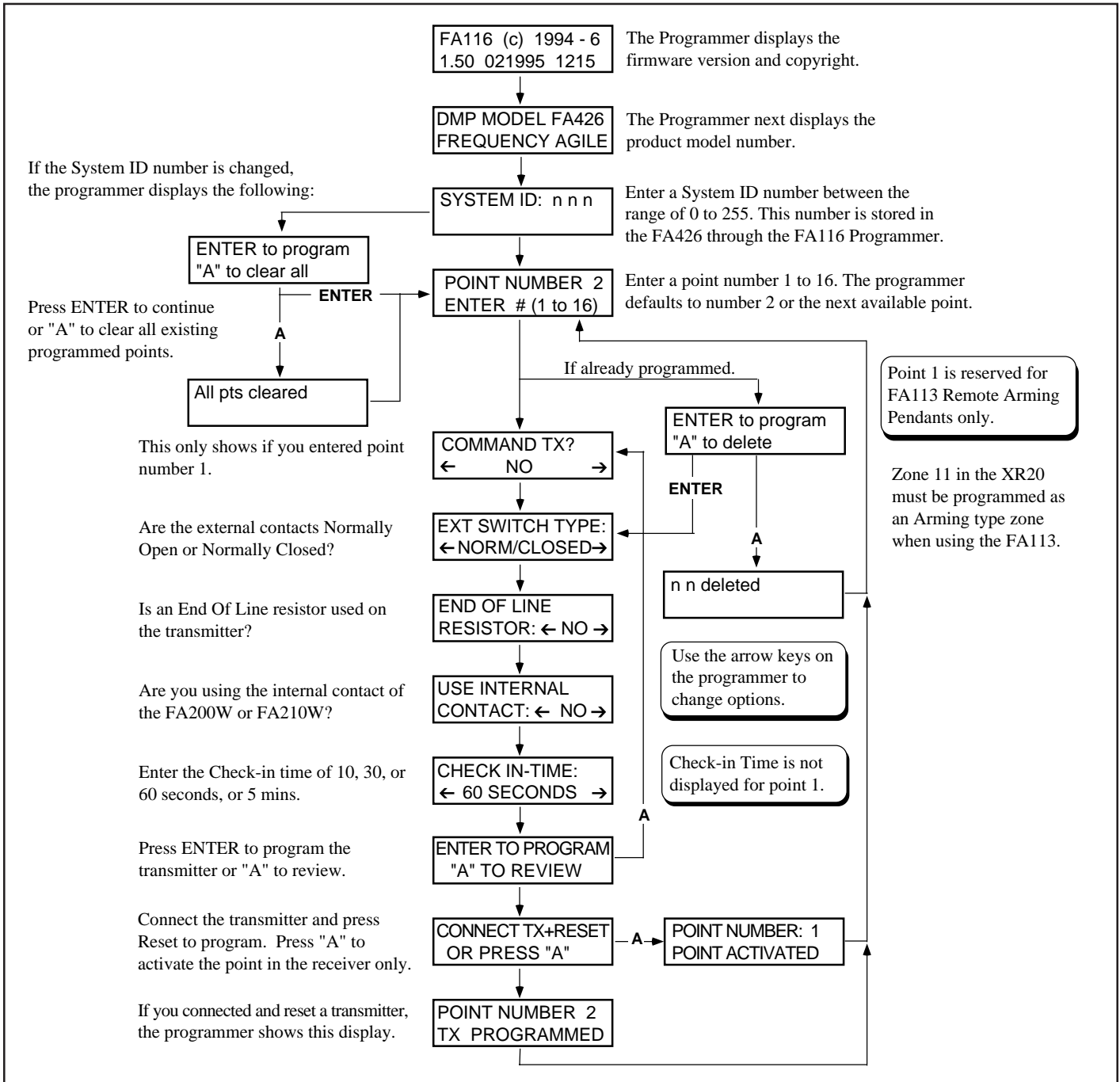
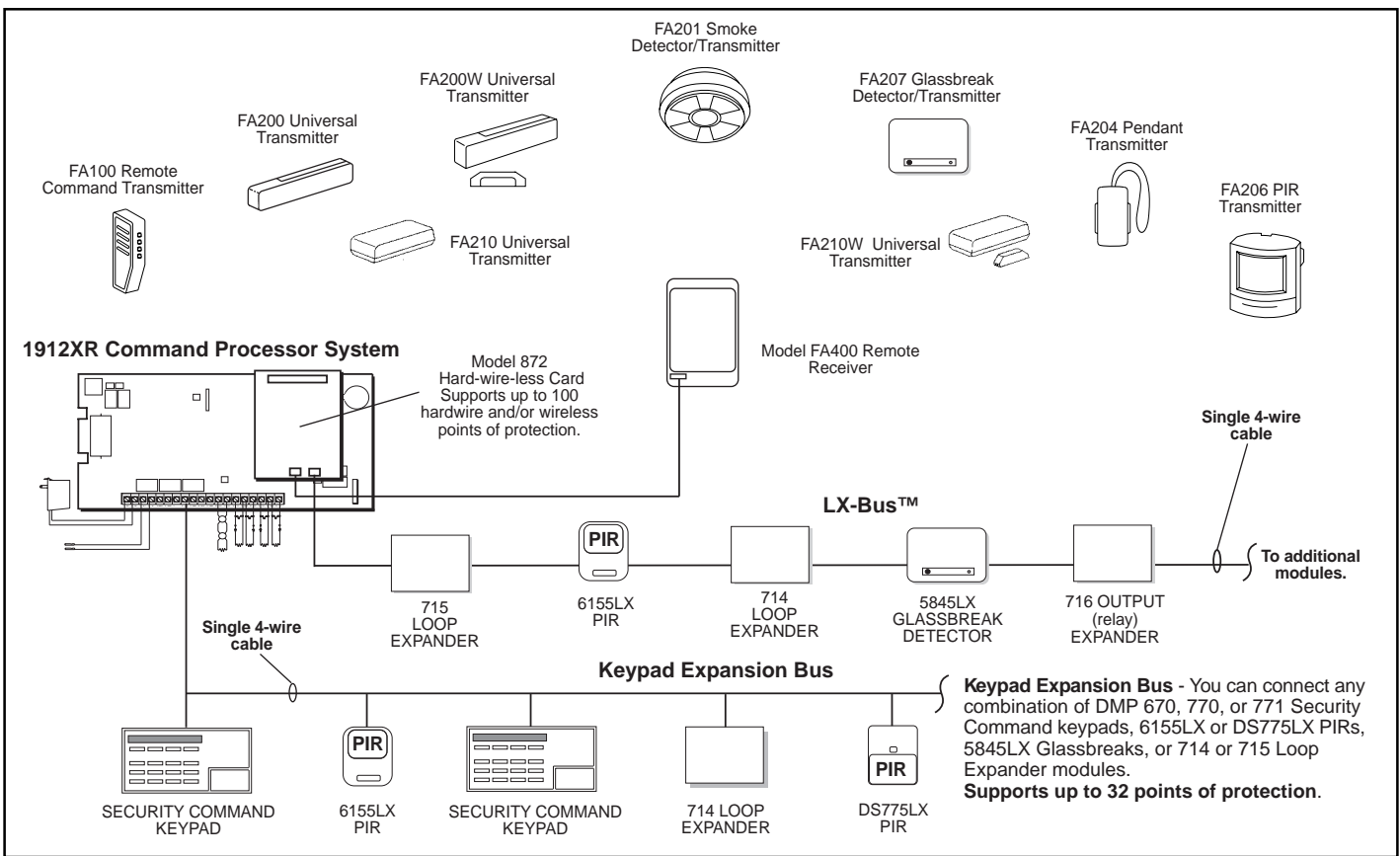


Figure 2: Wireless zone assignments.

## Digital Monitoring Products

2841 E. Industrial Drive Springfield, MO 65802-6310 800-641-4282

## Combined hardwire and wireless system



### Transmitter specifications

#### FA100 Command Transmitter

Four button remote control for arming, disarming, and panic. The remote control is not supervised.

Color: Dark Charcoal

#### FA200 Universal Transmitter

Connects to any Normally Open or Normally Closed switches, contacts, or sensors. Tamper protected, provides low battery warning and supports EOL resistor.

Color: Ivory or Brown

#### FA200W Universal Wide Gap Transmitter

Contains internal reed switch or can connect to any Normally Open or Normally Closed switches, contacts, or sensors. Tamper protected, provides low battery warning and supports EOL resistor. Wide gap magnet provided.

Color: Ivory or Brown

#### FA201 Smoke Detector/Transmitter

Photoelectric detector with built-in transmitter. Provides local and transmitted low battery warning.

Color: Ivory

#### FA204 Pendant Transmitter

Two button activation signals emergency situation. Includes necklace cord. Optional belt holster.

Color: Ivory

#### FA206 Sharpshooter™ PIR Transmitter

Standard 90° field of view by 45 ft. radius with pulse count verification. Includes mounting hardware for wall or corner.

Color: Ivory

#### FA207 Glassbreak Detector Transmitter

Detects acoustic pattern of breaking glass, even through blinds and drapes, in up to 20 ft. radius.

Color: White

#### FA210 Universal Transmitter

Sized reduced. Connects to any Normally Open or Normally Closed switches, contacts, or sensors. Tamper protected, provides low battery warning and supports EOL resistor.

Color: Ivory or Brown

#### FA210W Universal Wide Gap Transmitter

Contains internal reed switch or can connect to any Normally Open or Normally Closed switches, contacts, or sensors. Tamper protected, provides low battery warning and supports EOL resistor. Wide gap magnet provided.

Color: Ivory or Brown

#### FA400 Remote Receiver

Connects with 3-wire harness to DMP 872 interface card. Allows you to supervise up to 100 wireless transmitters.

#### FA525 Real-Time Repeater

Effectively doubles the range and increases the reliability of wireless transmitters. Weatherproof housing can accommodate 1.2 Ah battery. One 14 VAC transformer included.